

## OFFICE SPACE NOW AVAILABLE

OKLAHOMA JOURNAL BUILDING-7430 SE 15TH, MIDWEST CITY

### PROPERTY DESCRIPTION

#### PROPERTY OVERVIEW

Available SF: 28,493 Square Feet

Largest Contiguous: 21,046 Square Feet

Smallest Contiguous: 2,351 Square Feet

Lease Rate: \$16.50 SF/yr (Modified Gross)

Term: 5 years

Building Size: 35,688 SF

Building Class: A

Year Built: 1954 Recently Remodeled

#### COMMENTS:

The iconic Oklahoma Journal Building is a beautiful Class "A" remodel situated less than a mile north of I-40 and Midwest City Regional Hospital. The building is fully ADA compliant with abundant free surface parking. Featuring expansive glass lines, high ceilings, and a generous build out allowance with a minimum 5-year term.

#### PERFECT BUILDING FOR:

Defense contractors

Legal offices

Real Estate offices

Public Services



For more information please contact:

#### DEREK JAMES

djames@priceedwards.com  
405.843.7474

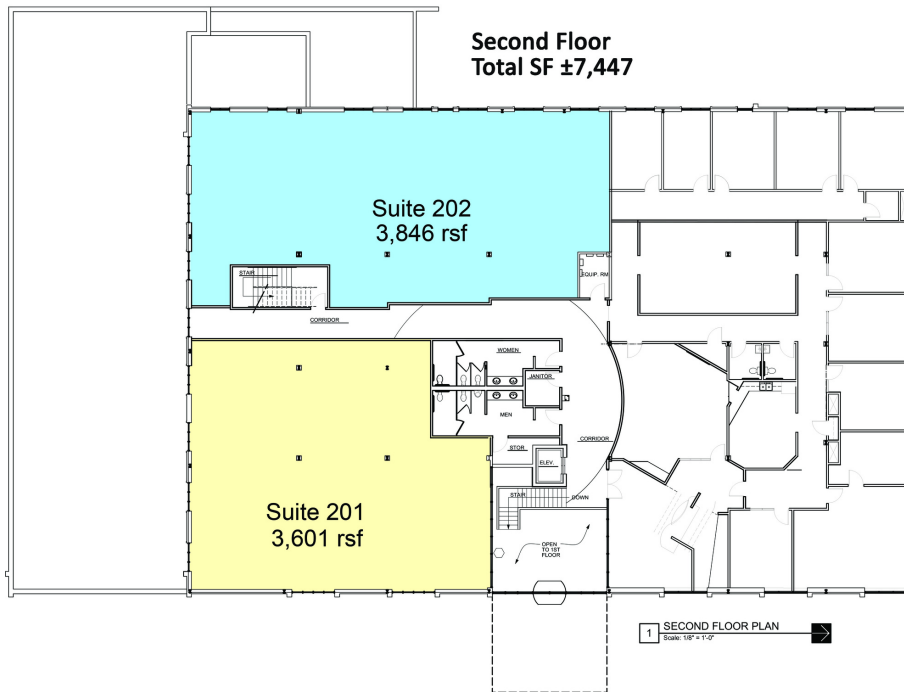
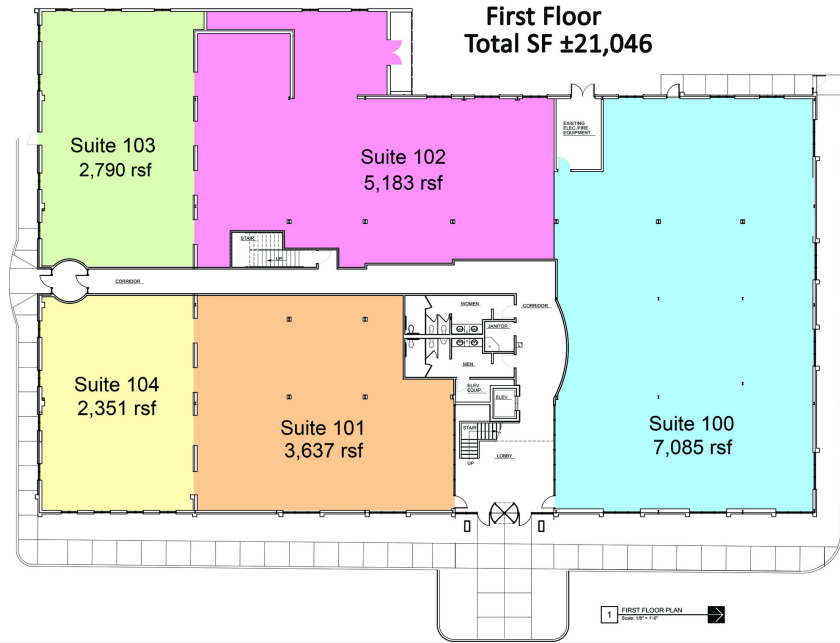
#### TOM FIELDS

tfields@priceedwards.com  
405.239.1205

# OFFICE SPACE NOW AVAILABLE

OKLAHOMA JOURNAL BUILDING-7430 SE 15TH, MIDWEST CITY

## FLOOR PLANS



For more information please contact:

**DEREK JAMES**  
djames@pricedwards.com  
405.843.7474

**TOM FIELDS**  
tfields@pricedwards.com  
405.239.1205